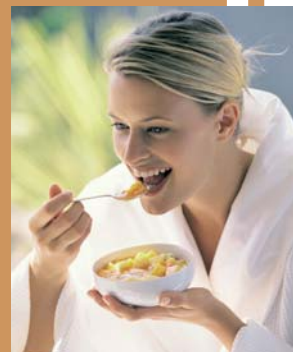




TRACKING SYSTEM





TRACKING SYSTEM IN THE CONTEXT OF AN HACCP APPROACH

ISECOM is an HACCP monitoring system used to record, transfer and analyse data from ISECO trolleys.

The recording and transfer of data is performed automatically during trolley operation negating the need for human intervention or trolley downtime.



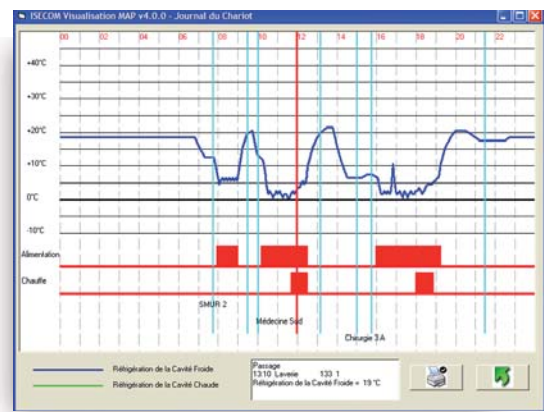
Recorded data

Data is stored on the trolley's memory board.

ISECOM records the following data :

- ON/OFF plus heating cycle start and finish times and date
- Cavity temperature : every 15 minutes when unplugged, every 5 minutes when plugged
- Heating cycle duration
- Type of end of cycle (normal, manual stop, power line cut off)
- Geographical traceability (requires one or more check-point units)

- Service name (trolley with programmable label option)
- Running up and down times.

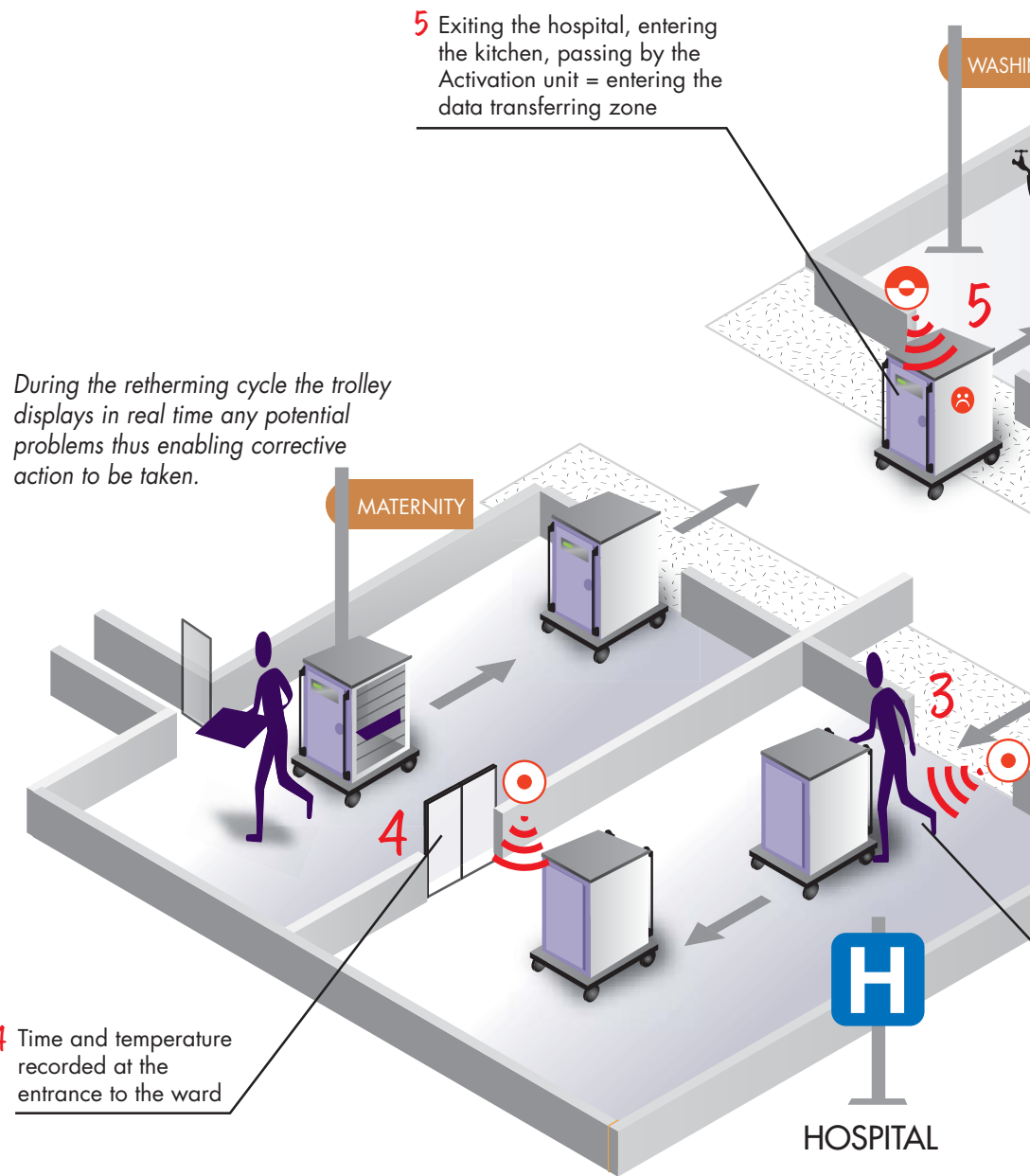


ISECO, to enjoy nice and healthy food.

Therefore, the preservation of food quality as well as the pleasure and safety of your customers will always remain at the heart of our concerns.



ISECOM OPERATING PRINCIPLES



7 Data transfer is automatically performed during trolley operation negating the need for human intervention or trolley down time however many trolleys used

8 PC data monitoring and storing

6 Washing area

6 CARBO LOADING AREA

TECHNICAL SERVICES

MANAGER

STORAGE BEFORE PLATING

PLATING




STORAGE BEFORE DEPARTURE

CENTRAL KITCHEN

1 Plating and loading of the trays. Temperatures recording

2 Carbo loading (when relevant) check-point recording

3 Time and trolley cavity temperature recorded on arrival at the hospital

-  Check-point unit
-  Activation unit
-  Data transfer unit



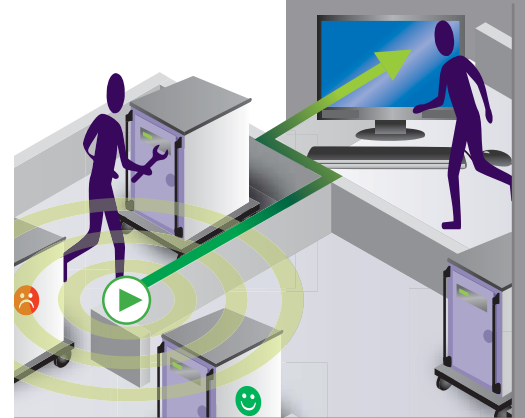
Unit

Data transfer

Data is passed to a PC by radio transmission via the Data Transferring Unit. Radio communication and data transfer is automatic during trolley operation preventing trolley downtime.

Transmissions are secure : data is stored until a transfer has taken place.

The radio devices of ISECOM belong the SRDs class (Short Range Devices). Channel frequency : 868 MHz, transmission power : 25 mW (Apparent Power Radiated).



ISECOM system components

- ISECOM data recording option

It includes a Radio Transfer Board and a "Battery Pack" powering the Radio Transfer Board when the trolley is not connected to the main power line.



- Check-point unit

One or more Check-point units are installed on the route of the trolleys enabling Geographical Traceability.

- Activation unit

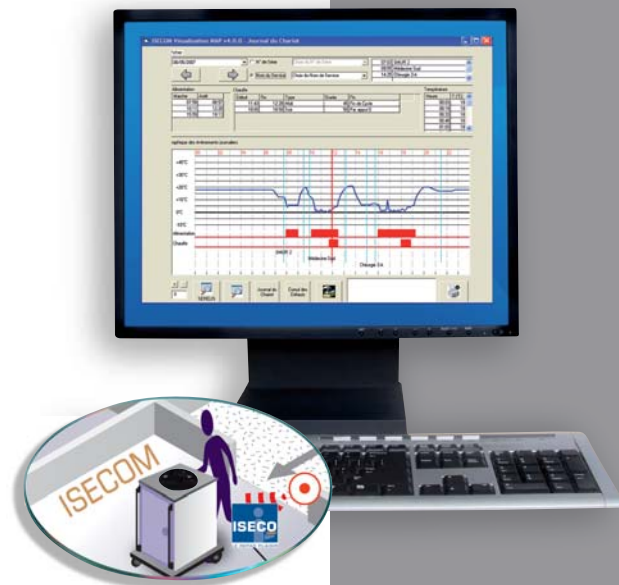
This unit indicates to the trolley passing nearby that it is entering the data transferring zone and if critical events have occurred during the last 24 hours an alarm will be raised.

- Data Transferring unit

It receives data recorded by the trolleys and transfers it to a PC.

- CD ISECOM Software

This CD allows for the installation of ISECOM Acquisition and Visualisation applications.

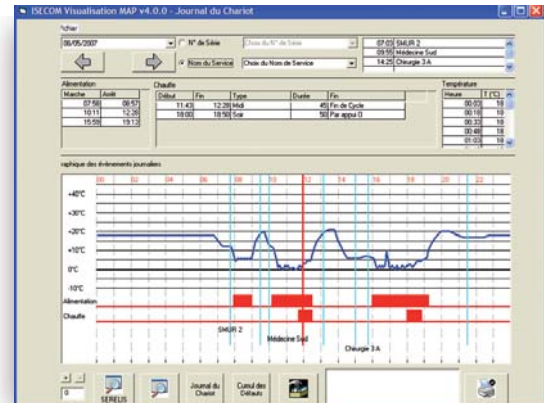


Data monitoring

ISECOM Visualisation application allows for the monitoring of the data stored on the database.

Its main features are :

- sorting and selection by date serial no. or service name
- data display in table or chart format.



General report : daily events graph.

Visualisation software

• The screens

- general report
- data graphs
- transfer and critical events report
- trolley report
- critical events list by trolley
- power cut-off report

Date	06/03/2005	07/03/2005	08/03/2005	09/03/2005	10/03/2005
0400004	+	+	+	+	+
0400001	+	+	+	+	+
0400002	+	+	+	+	+
0400005	+	+	+	+	+

Transfer and critical events report.

Date	05/05/2007
07:03	Nom du Service : SMUR 2
07:45	Passage Oubi Expédition
07:58	Alimentation Marche
08:57	Alimentation Arrêt
09:30	Passage Levaine
09:35	Transfert HACCP
09:55	Nom du Service : Médecine Sud
10:01	Passage Oubi Expédition
10:11	Alimentation Marche
11:43	Début Chauffage - Midi
11:58	Début 09 Plaque ou RegChaud 05:00 B
12:28	Fin Chauffage - Fin de Cycle - Durée : 45 minutes
12:28	Alimentation Arrêt
13:10	Passage Levaine
13:15	Transfert HACCP
14:25	Nom du Service : Charge 3.A
15:02	Passage Oubi Expédition
15:45	Passage Couloir Chir 3
15:59	Alimentation Marche
18:00	Début Chauffage - Soir
18:50	Fin Chauffage - Per appui O - Durée : 50 minutes
19:13	Alimentation Arrêt
21:30	Passage Levaine
21:35	Transfert HACCP

The trolley's report allows you to quickly get a summary of the trolley's use over a given day.

Date	08/05/2007	02/05/2007	18/10/2004	12/10/2004	24/05/2004
11:58	09 Plaque ou RegChaud	06:00	B		
17:27	09 Plaque ou RegChaud	06:00	B		
18:01	09 Plaque ou RegChaud	02:00	A		
11:30	04 Réseau ou Pb Phase	48:00	0		
18:51	07 Identificateur	07:00	0		

Critical events list by trolley allows the Technical Services to quickly get a report starting from the implementation of the trolley.



They have placed their trust in us

EMS Val Fleuri GENEVE • Lincoln County
Hospital LINCOLN • Hospital Universitario
VALLODOLID • Lamia Hospital GRECE • Regina
CANADA • Children's Hospital ATHENE
Gregorio Maranon MADRID • Raigmore
Hospital INVERNESS • St Barts Hospital
LONDRES • Adullam Stiftung BASEL SUISSE
Clinique Génolier SUISSE • Mater Hospital
DUBLIN • Meier Hospital ISRAEL • Centre
Hospitalier ROUBAIX • Centre Hospitalier
Universitaire LILLE • Centre Hospitalier
Universitaire ST ETIENNE • Centre Hospitalier
ALES • Hôpital LANMEUR • Centre Hospitalier
PARAY LE MONIAL • Centre Hospitalier
ARMENTIERES • Centre Hospitalier BLOIS
Centre Hospitalier Louis Mourrier COLOMBES
Centre Hospitalier ROCHEFORT • Hôpital du Val
de Grâce PARIS • Centre Hospitalier DOUAI
Centre Hospitalier Princesse Grace MONACO
Centre Hospitalier MAUBEUGE • Centre
Hospitalier ST AMAND LES EAUX
Kreikrankenhaus WALKIRCHEN • LBK
HAMBURG • Mathilden Hospital BÜDINGEN
Universitätsklinikum MAINZ • St, Josef Hospital
LINNICH • Taunus Menü Service
NEU-ANSPACH • St, Antonius Krankenhaus
SCHLEIDEN • Universitätsklinikum ROSTOCK
Westpfalzlinikum KAISERSLAUTERN • Karl-Olga
Krankenhaus - STUTTGART • Krankenhaus
WEGSCHEID • Universitätsklinikum-
MAGDEBURG • Bathildis-Krankenhaus BAD
PYRMONT • Sint Lucas Ziekenhuis BRUGGE
Stichting Adhesie DEVENTER • Meander Centre
Medical AMERSFOORT • OLV Hospital
AMSTERDAM • University Medical Centre
GRONINGEN • AZ Alma. Sijsele EEKLO • Isala
Klinieken ZWOLLE • Centre Hospitalier Régional
HUY • Delta ziekenhuis POORTUGAAL
University Medical Centre UTRECHT • Albert
Schweitzer Ziekenhuis DORDRECHT • Hôpital
VILLIERS ST DENIS • Institut Gustave Roussy
VILLEJUIF • Ziekenhuis Netwerk ANTWERPEN
OCMW REKEM • Stichting Allevo ZEELAND
Stichting Saffier DEN HAAG

and many others...

TRACKING SYSTEM